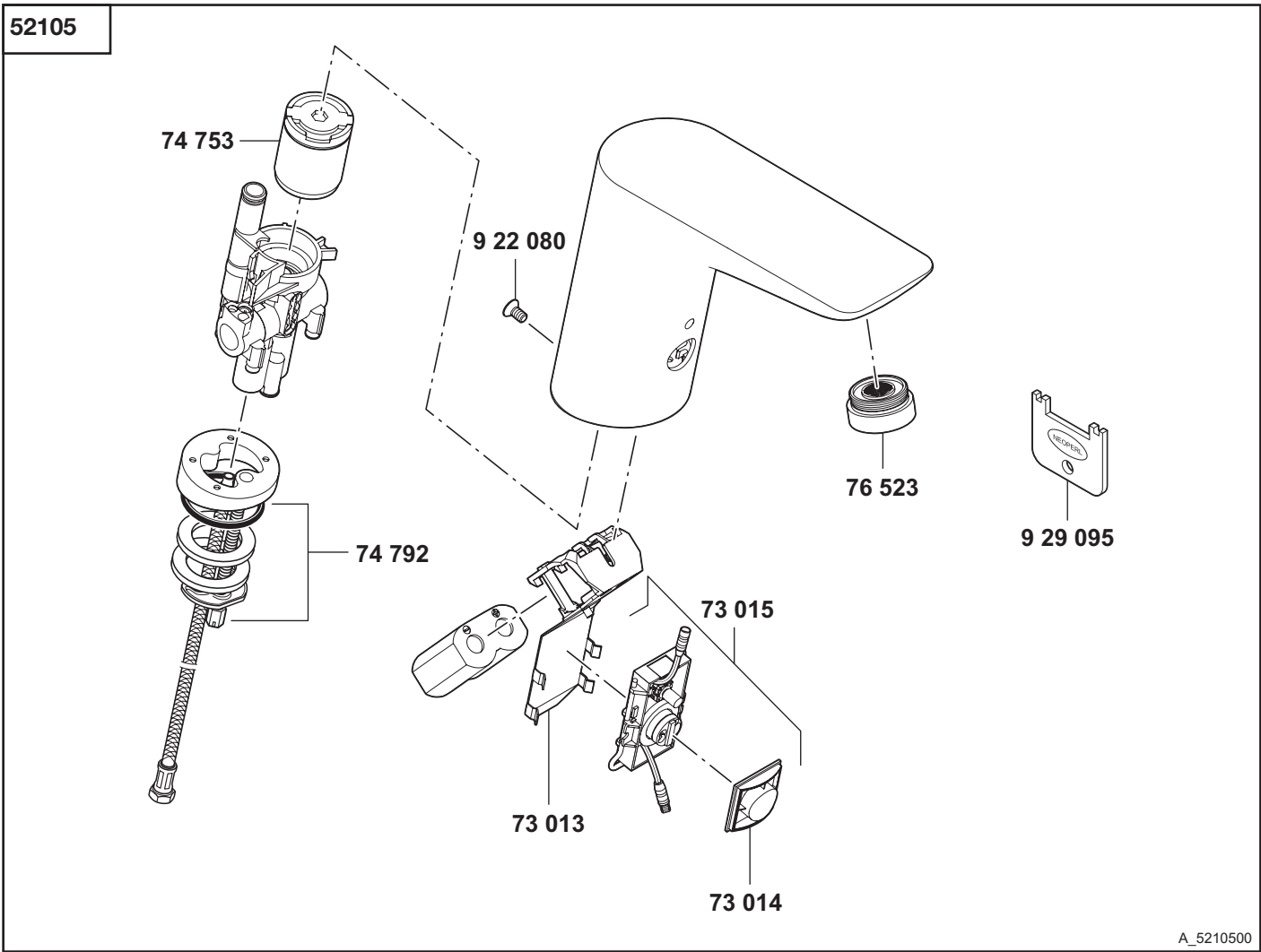


A_521050A

| 52105 | 09/15 → Elektronisches Standventil DN 10 | electronic controlled pillar tap DN 10 | elektronische wastafelkraan 3/8" |
|-------|---|--|--|
| | 73 014 Sensor | Sensor | Sensor |
| | 73 015 Elektronikmodul | electronic unit | elektronica module |
| | 73 557 Batteriefach | battery box | batterijcompartiment |
| | 74 753 Kartuschenventil | cartridge unit | cartouche-magneetventiel |
| | 74 792 Befestigungssatz | assembling set | bevestigingsset |
| | 76 523 Cascade-Strahlregler M 24 x 1/PCA, diebstahlsicher | Cascade-flow straightener M 24 x 1/PCA, antitheft device | Cascade straalbreker M 24 x 1/PCA, diefstalbestendig |
| | 922 080 Schraube | screw | schroef |
| | 929 095 DS-Schlüssel | DS-driver | speciale sleutel (anti diefstal) |



A_5210500

| 52105 | Elektronisches Standventil DN 10 | electronic controlled pillar tap DN 10 | elektronische wastafelkraan 3/8" |
|-------|--|---|---|
| | 73 013 Batteriehalter | battery holder | batterijhouder |
| | 73 014 Sensor | Sensor | Sensor |
| | 73 015 Elektronikmodul | electronic unit | elektronica module |
| | 74 753 Kartuschenventil | cartridge unit | cartouche-magneetventiel |
| | 74 792 Befestigungssatz | assembling set | bevestigingsset |
| | 76 523 Cascade-Strahlregler M 24 x 1/PCA, diebstahlsicher | Cascade-flow straightener M 24 x 1/PCA, antitheft device | Cascade straalbreker M 24 x 1/PCA, diefstalbestendig |
| | 922 080 Schraube | screw | schroef |
| | 929 095 DS-Schlüssel | DS-driver | speciale sleutel (anti diefstal) |